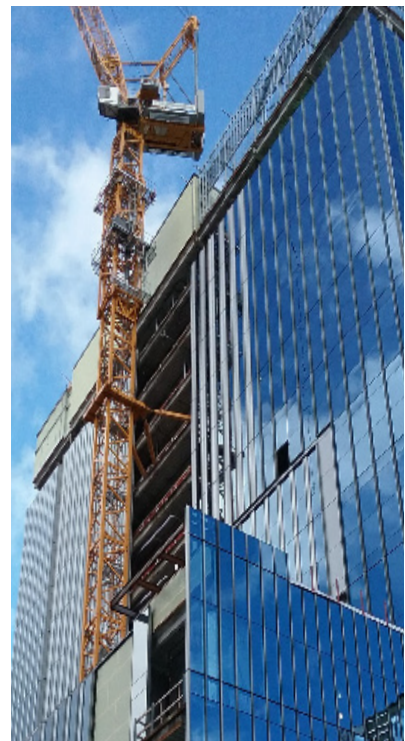
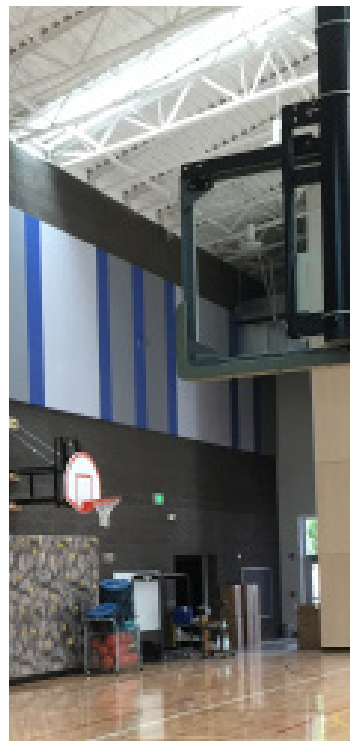
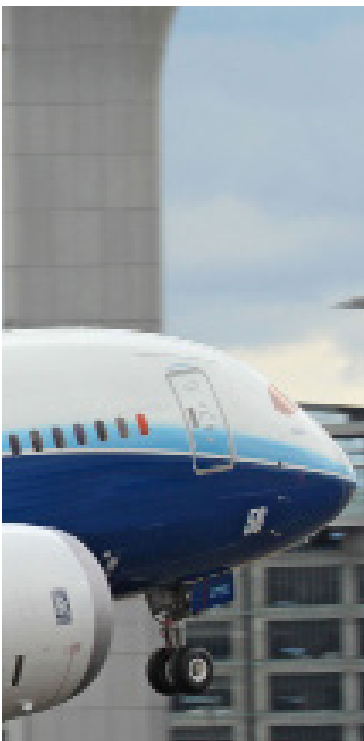


A collage of three grayscale images: on the left, three construction workers in hard hats and safety vests; in the center, a worker in a hard hat and safety vest using a handheld electronic device; on the right, a worker in a hard hat and safety vest standing on a construction site.

NWESI

NorthWest Engineering Service, Inc.

INTEGRITY • TEAMWORK • PROFESSIONALISM • QUALITY



STATEMENT OF QUALIFICATIONS



WHO WE ARE

SERVING THE PACIFIC NORTHWEST SINCE 1958

NorthWest Engineering Service Inc. (NWESI) is a leader in the industry, providing engineering services supplemental to design and construction that ensure high-performance building systems become reality. Our highly-credentialed professionals optimize facility performance, comfort, and energy efficiency.

Every employee at NWESI is a valuable team member and influences the success of the company. We have implemented programs to support leadership development and enhance employee skills and capabilities. Our team members promote company and community programs that encourage environmental sustainability, cultural diversity, health and wellness, and STEM education. As an employee-owned company, the men and women of NWESI have continued to build on a foundation of technical excellence, integrity, and a passion for client service.

“I love working for a company where everyone is treated with the same amount of respect. We are all trusted to do our own jobs and treated as valuable team members. I also enjoy having the opportunity to help with other areas of the company: accounting, business development, safety, and even going out into the field.”

SHAUNA FOX
Project Administrator

SYSTEM PERFORMANCE

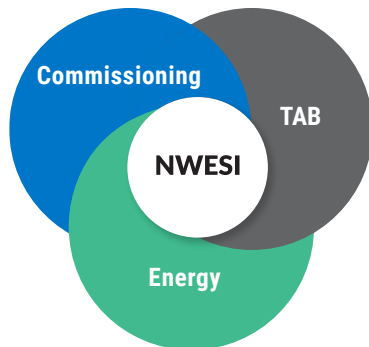


OVERVIEW

We work in a wide variety of facilities, and are experienced with complex building controls and automation. Our team members use established engineering principles and in-depth knowledge of systems gained from decades of hands-on experience. We work cooperatively with project team members to properly test, validate, and optimize system performance. Our professionals have a comprehensive understanding of systems interaction and their application to specific facility types.

OUR BUSINESS SECTORS

- Aviation
- Commercial
- Data Centers
- Government/Public
- Healthcare
- Higher Education
- High Tech
- Industrial
- K-12



NWESI is a leader in developing rigorous Commissioning processes for the building industry, combining the benefits of occupant health and comfort, energy efficiency, and facilities maintainability into comprehensive [Whole Building Commissioning](#).

OUR LOCATIONS

NWESI HQ:

8700 SW Creekside Pl.
Beaverton, Oregon 97008
503-639-7525

AIR:

90710 Huntley Court
Coburg, Oregon 97408
541-484-1928

NWESI:

9543 W Emerald Street
Suite 104
Boise, Idaho 83704
208-342-1231



EFFICIENCY



University of Idaho Integrated Research and Innovation Center

“TAB services were provided in a professional manner, within predetermined time constraints, and for a reasonable fee.”

NWESI's knowledge and professionalism allowed this successful LEED project to be transferred to the owner with accurate equipment operations and performance data.”

KEVIN HATTENBURG
Facilities

OCCUPANT COMFORT



OUR CREDENTIALS

PROFESSIONAL CERTIFICATIONS

- 4 Registered Professional Engineers
- 1 AABC TBE-Test and Balance Engineer
- 2 AABC TBT-Test and Balance Technician
- 5 ACG CxA-Commissioning Authorities
- 2 ACG EMP-Energy Management Professionals
- 1 AEE CEA-Certified Energy Auditor
- 1 AEE CEM-Certified Energy Manager
- 2 LEED Accredited Professionals
- 6 NEBB Certified Professionals
- 3 NEBB Certified Technicians
- 1 Level III Certified Thermographer

OUR CREDENTIALS:

Oregon

Oregon Engineering License
Construction Contractor's License

Idaho

Contractor's License
Idaho Engineering License
Public Works License

Washington

Construction Contractor's License
Washington Engineering License

California

California Contractor's License
Certificate of Qualifications

Montana

Montana Contractor's License
Certificate of Authority



OUR SERVICES

Cx Commissioning

COMMISSIONING (CX) is a systematic process for ensuring building systems (mechanical, electrical, plumbing, envelope, etc.) function and perform as intended. It includes design review, verification of equipment installation and observation of modes of operation. This process can be applied to new buildings and major renovations (Cx) or existing buildings (Retro-Cx). Software data analytics can also be set up to continuously monitor operations and flag potential issues (Monitor-Based or Ongoing Cx).

TAB Testing, Adjusting & Balancing

TESTING, ADJUSTING, AND BALANCING (TAB) involves measuring and adjusting air and water flows to meet design criteria. TAB is a vital step for complex air and hydronic systems within buildings and throughout campuses to ensure HVAC systems are optimized for occupant comfort, energy efficiency, indoor air quality, and manufacturing processes.

BET Building Envelope Testing

BUILDING ENVELOPE TESTING (BET) determines the air and water leakage rates at standard pressures and is often a regulatory requirement. Test areas can range from single rooms to a complete multi-story building. BET is usually combined with Infrared Imaging Testing to identify breaches in the envelope.

BHT Building HVAC Tune-UP

BUILDING HVAC TUNE-UPS (BHT) should be performed regularly and before major renovations. As buildings age and HVAC systems are modified, efficiencies quickly deteriorate and systems often operate in off-design conditions. A thorough survey with facilities mapping is the first step to identifying solutions.

FSD Fire Smoke Damper Testing

FIRE SMOKE DAMPER TESTING (FSD) Fire Smoke Dampers are located at HVAC duct penetrations through fire rated walls, ceilings, and floors. These devices prevent fire and smoke from propagating through HVAC ductwork. Testing and maintaining FSD's verifies and documents that critical FLS building systems operate as required.

BUILDING HEALTH



Eugene School District 4J Bond Program

"NWESI came on board early and provided us with a Commissioning Plan and equipment inventory list for all the building systems. It was very helpful in doing the pre-planning with everyone, and helping to streamline the project."

One of the best aspects of NWESI is they are turn-key professionals and we can count on them bringing issues to the front only when needed. A consultant we can count on without demanding constant supervision is the biggest plus!"

KIRK GEBB
Project Manager



OUR SERVICES CONTINUED

SSS

Site Sustaining Services

SITE SUSTAINING SERVICES (SSS) can be implemented through on-call contracts, scheduled periodic assessments, or on-site location to suit clients' needs. Our engineers and technicians are integral partners with Operations and Maintenance teams at complex facilities across a wide variety of industries.

CPT

Cleanroom Performance Testing

CLEANROOM PERFORMANCE TESTING (CPT) encompasses a number of different tests, depending on customer requirements, including Particle Counts, Ventilation Rates, Room Pressurization, Velocity Uniformity, Temperature and Humidity Measurements, and Filtration Verification.

SEMICONDUCTOR Tool Install Balancing

SEMICONDUCTOR TOOL INSTALL BALANCING includes working with clients to help protect manufacturing equipment and optimize performance. We specialize in tool hookup and have the expertise to adjust process gas and exhaust systems to support all aspects of production in the microchip industry.

EAS

Energy Assessment Services

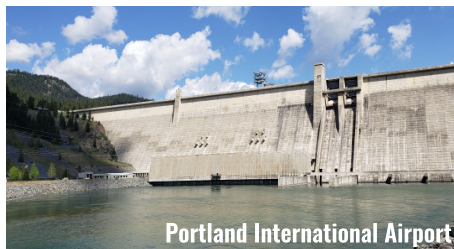
ENERGY ASSESSMENT SERVICES (EAS) are far more than simple energy audits. Whether designing a building for Net Zero Energy (NZE) usage, LEED certification, or simply to reduce energy costs, a comprehensive assessment is essential. We identify weaknesses during the early stages of project planning and troubleshoot poorly performing systems.

OTHER Specialties

- Regulatory Compliance Support for Hospital Accreditation Programs
- Dust Monitoring and Mitigation
- Fume Hood Testing
- Forensic Investigations
- Infrared Imaging
- Sequence of Operations (SOO) Reconstruction
- Updated HVAC Systems Drawings

PROJECTS AND SELECT CLIENTS

We encourage you to visit nwesi.com/projects to learn more about our latest work.





COLLABORATION

Park Condominiums Owners Association, The Cosmopolitan

"NWESI's approach and execution of doing work both onsite and offsite have been valuable to the project team efforts."

Their role with the team was communicated clearly and their execution of work has been impactful. They identified issues within the respective mechanical systems and provided concise direction to address each problem and situation. The issues detected were negotiated with the developer in order for them to be covered under warranty."

TIM MILLER
Kin Living

NWESI
Headquarters:

8700 SW Creekside Pl.
Beaverton, OR 97008
503-639-7525
nwesi.com

