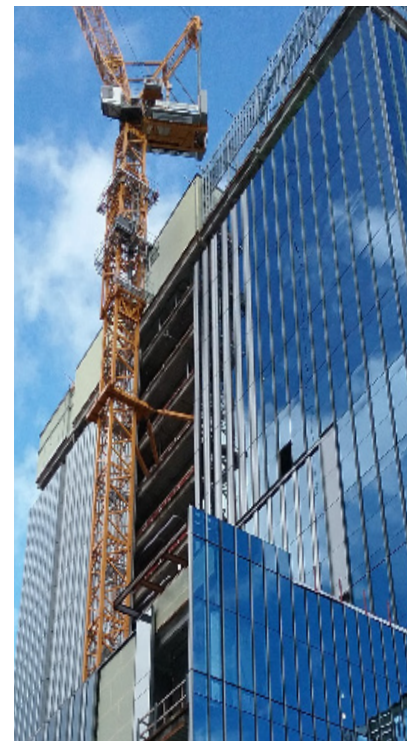
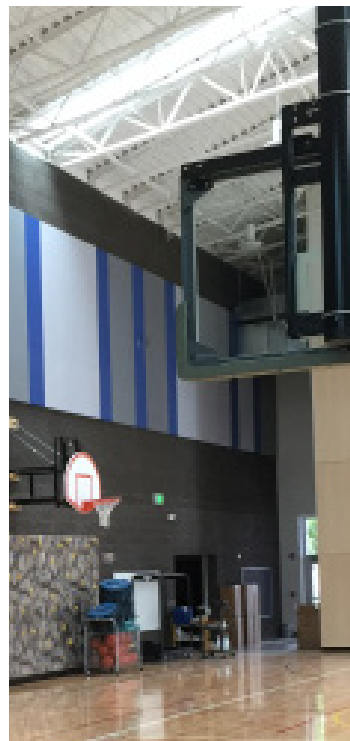
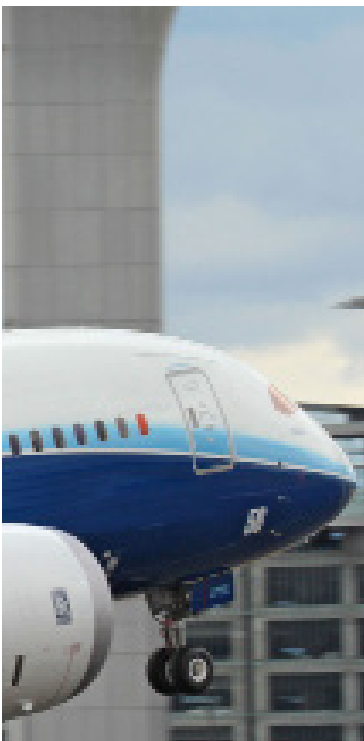




**NWESI**

NorthWest Engineering Service, Inc.

INTEGRITY • TEAMWORK • PROFESSIONALISM • QUALITY



**STATEMENT OF QUALIFICATIONS**



# WHO WE ARE

## SERVING THE PACIFIC NORTHWEST SINCE 1958

NorthWest Engineering Service Inc. (NWESI) is a leader in the industry, providing engineering services supplemental to design and construction that ensure high-performance building systems become reality. Our highly-credentialed professionals optimize facility performance, comfort, and energy efficiency.

Every employee at NWESI is a valuable team member and influences the success of the company. We have implemented programs to support leadership development and enhance employee skills and capabilities. Our team members promote company and community programs that encourage environmental sustainability, cultural diversity, health and wellness, and STEM education. As an employee-owned company, the men and women of NWESI have continued to build on a foundation of technical excellence, integrity, and a passion for client service.

*“ I love working for a company where everyone is treated with the same amount of respect. We are all trusted to do our own jobs and treated as valuable team members. I also enjoy having the opportunity to help with other areas of the company: accounting, business development, safety, and even going out into the field. ”*

SHAUNA FOX  
Project Administrator

# SYSTEM PERFORMANCE

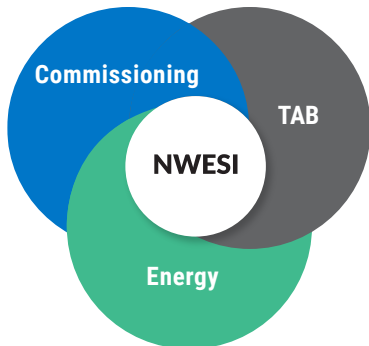
A photograph of an industrial facility, likely a power plant or refinery, featuring several large, white, curved ducts or chimneys. The ducts are supported by a complex network of white metal scaffolding. The background shows a clear blue sky with some light clouds. The overall scene conveys a sense of industrial scale and engineering.

# OVERVIEW

We work in a wide variety of facilities, and are experienced with complex building controls and automation. Our team members use established engineering principles and in-depth knowledge of systems gained from decades of hands-on experience. We work cooperatively with project team members to properly test, validate, and optimize system performance. Our professionals have a comprehensive understanding of systems interaction and their application to specific facility types.

## OUR BUSINESS SECTORS

- Aviation
- Commercial
- Data Centers
- Government/Public
- Healthcare
- Higher Education
- High Tech
- Industrial
- K-12



NWESI is a leader in developing rigorous Commissioning processes for the building industry, combining the benefits of occupant health and comfort, energy efficiency, and facilities maintainability into comprehensive [Whole Building Commissioning](#).

# OUR LOCATIONS

## NWESI HQ:

8700 SW Creekside Pl.  
Beaverton, Oregon 97008  
503-639-7525

## AIR:

90710 Huntley Court  
Coburg, Oregon 97408  
541-484-1928

## NWESI:

9196 W Emerald Street  
Suite 190  
Boise, Idaho 83704  
208-342-1231





# EFFICIENCY



## **University of Idaho Integrated Research and Innovation Center**

*“TAB services were provided in a professional manner, within predetermined time constraints, and for a reasonable fee.”*

*NWESI’s knowledge and professionalism allowed this successful LEED project to be transferred to the owner with accurate equipment operations and performance data.”*

**KEVIN HATTENBURG**  
Facilities

# OCCUPANT COMFORT





# OUR CREDENTIALS

## PROFESSIONAL CERTIFICATIONS

- 4 Registered Professional Engineers
- 1 AABC TBE-Test and Balance Engineer
- 2 AABC TBT-Test and Balance Technicians
- 5 ACG CxA-Commissioning Authorities
- 2 EMA EMP-Energy Management Professionals
- 1 AEE CEA-Certified Energy Auditor
- 1 AEE CEM-Certified Energy Manager
- 2 LEED Accredited Professionals
- 6 NEBB Certified Professionals
- 3 NEBB Certified Technicians
- 1 Level I Certified Thermographer
- 1 Level III Certified Thermographer

## OUR CREDENTIALS:

### Oregon

Oregon Engineering License  
Construction Contractor's License

### Idaho

Contractor's License  
Idaho Engineering License  
Public Works License

### Washington

Construction Contractor's License  
Washington Engineering License

### California

California Contractor's License  
Certificate of Qualifications

### Montana

Montana Contractor's License  
Certificate of Authority



# OUR SERVICES

## **Cx** Commissioning

COMMISSIONING (CX) is a systematic process for ensuring building systems (mechanical, electrical, plumbing, envelope, etc.) function and perform as intended. It includes design review, verification of equipment installation and observation of modes of operation. This process can be applied to new buildings and major renovations (Cx) or existing buildings (Retro-Cx). Software data analytics can also be set up to continuously monitor operations and flag potential issues (Monitor-Based or Ongoing Cx).

## **TAB** Testing, Adjusting & Balancing

TESTING, ADJUSTING, AND BALANCING (TAB) involves measuring and adjusting air and water flows to meet design criteria. TAB is a vital step for complex air and hydronic systems within buildings and throughout campuses to ensure HVAC systems are optimized for occupant comfort, energy efficiency, indoor air quality, and manufacturing processes.

## **BET** Building Envelope Testing

BUILDING ENVELOPE TESTING (BET) determines the air and water leakage rates at standard pressures and is often a regulatory requirement. Test areas can range from single rooms to a complete multi-story building. BET is usually combined with Infrared Imaging Testing to identify breaches in the envelope.

## **BHT** Building HVAC Tune-UP

BUILDING HVAC TUNE-UPS (BHT) should be performed regularly and before major renovations. As buildings age and HVAC systems are modified, efficiencies quickly deteriorate and systems often operate in off-design conditions. A thorough survey with facilities mapping is the first step to identifying solutions.

## **FSD** Fire Smoke Damper Testing

FIRE SMOKE DAMPER TESTING (FSD) Fire Smoke Dampers are located at HVAC duct penetrations through fire rated walls, ceilings, and floors. These devices prevent fire and smoke from propagating through HVAC ductwork. Testing and maintaining FSD's verifies and documents that critical FLS building systems operate as required.

# BUILDING HEALTH



## Eugene School District 4J Bond Program

*“NWESI came on board early and provided us with a Commissioning Plan and equipment inventory list for all the building systems. It was very helpful in doing the pre-planning with everyone, and helping to streamline the project.”*

*One of the best aspects of NWESI is they are turn-key professionals and we can count on them bringing issues to the front only when needed. A consultant we can count on without demanding constant supervision is the biggest plus!”*

**KIRK GEBB**  
Project Manager

# RELIABILITY



# OUR SERVICES CONTINUED

## SSS

### Site Sustaining Services

SITE SUSTAINING SERVICES (SSS) can be implemented through on-call contracts, scheduled periodic assessments, or on-site location to suit clients' needs. Our engineers and technicians are integral partners with Operations and Maintenance teams at complex facilities across a wide variety of industries.

## CPT

### Cleanroom Performance Testing

CLEANROOM PERFORMANCE TESTING (CPT) encompasses a number of different tests, depending on customer requirements, including Particle Counts, Ventilation Rates, Room Pressurization, Velocity Uniformity, Temperature and Humidity Measurements, and Filtration Verification.

## SEMICONDUCTOR Tool Install Balancing

SEMICONDUCTOR TOOL INSTALL BALANCING includes working with clients to help protect manufacturing equipment and optimize performance. We specialize in tool hookup and have the expertise to adjust process gas and exhaust systems to support all aspects of production in the microchip industry.

## EAS

### Energy Assessment Services

ENERGY ASSESSMENT SERVICES (EAS) are far more than simple energy audits. Whether designing a building for Net Zero Energy (NZE) usage, LEED certification, or simply to reduce energy costs, a comprehensive assessment is essential. We identify weaknesses during the early stages of project planning and troubleshoot poorly performing systems.

## OTHER Specialties

- Regulatory Compliance Support for Hospital Accreditation Programs
- Dust Monitoring and Mitigation
- Fume Hood Testing
- Forensic Investigations
- Infrared Imaging
- Sequence of Operations (SOO) Reconstruction
- Updated HVAC Systems Drawings



# PROJECTS AND SELECT CLIENTS

We encourage you to visit [nwesi.com/projects](https://www.nwesi.com/projects) to learn more about our latest work.





# COLLABORATION



## **Park Condominiums Owners Association, The Cosmopolitan**

*“NWESI’s approach and execution of doing work both onsite and offsite have been valuable to the project team efforts.*

*Their role with the team was communicated clearly and their execution of work has been impactful. They identified issues within the respective mechanical systems and provided concise direction to address each problem and situation. The issues detected were negotiated with the developer in order for them to be covered under warranty.”*

**TIM MILLER**  
Kin Living

**NWESI**  
Headquarters:

8700 SW Creekside Pl.  
Beaverton, OR 97008  
503-639-7525  
[nvesi.com](http://nvesi.com)

**NWESI**